

# Installation Guide for the IN485HIT001R0\*\* Gateway

The order code may vary depending on the product seller and the buyer's location.

Version: 1.1.4

### Owner's record

Find the serial number on the silver label on the right side of the gateway. For sales or technical assistance, we recommend writing it in the space below:

SN:



This gateway is compatible with Modbus from firmware version 1.0.2.0 onwards. If you need to update your gateway, please contact the support department at <https://support.hms-networks.com/hc/en-us>.

## Safety Information



Follow these instructions carefully. Improper work may seriously harm your health and damage the gateway and/or any other equipment connected to it.

Only technical personnel, following these instructions and the country legislation for installing electric equipment, can install and manipulate this gateway.

Install this gateway indoors, in a restricted access location, avoiding exposure to direct solar radiation, water, high relative humidity, or dust.

All wires for communication and power supply (if needed) must only be connected to networks without routing to the outside plant. All communication ports are considered for indoor use and must only be connected to SELV circuits.

Disconnect power wires before manipulating and connecting them to the gateway.

Use SELV-rated NEC class 2 or limited power source (LPS) power supply.

Supply the correct voltage to power the gateway. See the Technical Specifications table at the end of this document.

Respect the expected polarity of power (if needed) and communication cables when connecting them to the gateway.

## Mounting

Mount the gateway inside the AC indoor unit, over a wall, or over a DIN rail.



Do not mount the gateway in air-handling units or conducts.



DIN rail mounting inside a grounded metallic cabinet is recommended.

### Mounting the gateway inside the AC indoor unit

1. Look for the proper place to mount the gateway, taking into consideration the following:

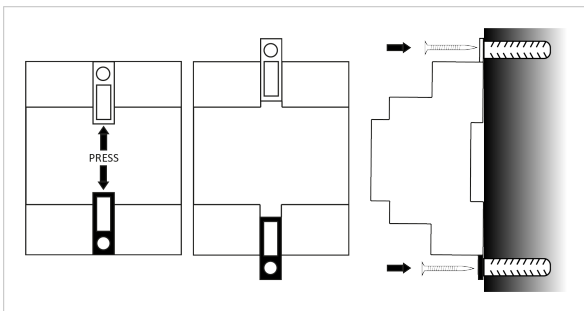


- Keep communication cables away from power and ground wires.
- Ensure the gateway does not block any mobile parts of the AC unit.

2. Leave the gateway on top of a secure, plain surface.
3. Use double-sided tape to ensure a secure fixing if needed.

### Wall mounting

1. Press the rear panel clips outwards until you hear a *click*.
2. Use the clip holes to screw the gateway to the wall.
3. Make sure the gateway is firmly fixed.



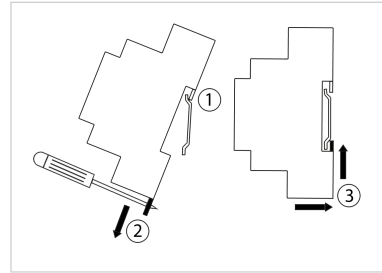
### DIN rail mounting

Keep the clips in its original position.

1. Fit the gateway's top-side clip in the upper edge of the DIN rail.
2. Press the low side of the gateway gently to lock it in the DIN rail.
3. Make sure the gateway is firmly fixed.



For some DIN rails, to complete step 2, you may need a small screwdriver or similar to pull the bottom clip down.



## Wiring

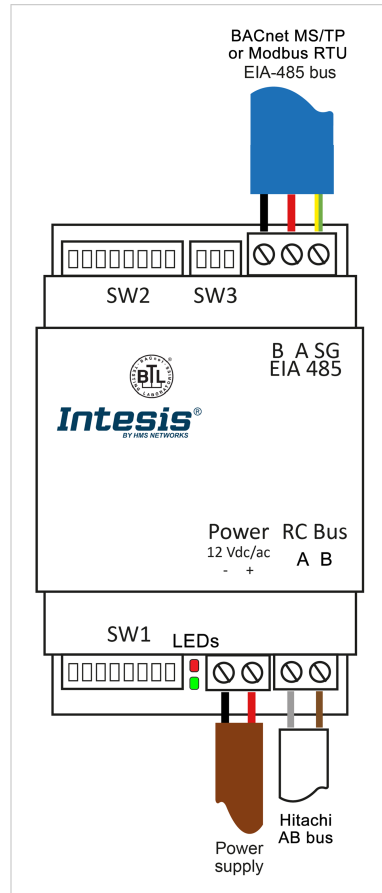


Figure 1. Wiring diagram (wire colors are indicative only)

1. Disconnect the AC system from the power source.
2. Mount the gateway in the desired place.
3. Connect the AB bus to the gateway's RC bus connector. This bus has no specific polarity.
4. Connect the BACnet MS/TP or Modbus RTU bus to the EIA-485 port of the gateway.



Observe polarity: B -, A +, and SG for ground connection.



Keep communication cables away from power and ground wires.



**Connection to an external power supply:** This gateway is powered by the AB bus itself, and there is no need to connect an external power supply. Nonetheless, the bus could not supply the needed power\* depending on the number and type of remote controllers installed. If that's the case, connect a 12 VDC/VAC SELV-rated NEC class 2 or Limited Power Source (LPS) power supply in the gateway's Power connector.

\*Some signs indicating there is not enough power in the bus may include, for example, a malfunction of the remote controllers' displays or performance.

### DIP Switches

The gateway includes three DIP switches: SW1 (8 switches) at the bottom and SW2 (8 switches) and SW3 (3 switches) at the top.

Table 1. SW1 (P1, P5): Gateway configuration; (P6 to P8): BACnet MS/TP or Modbus RTU baudrate

Binary value b0 .. b7	Position								Description	
	1	2	3	4	5	6	7	8	BACnet	Modbus
0XXXXXXX	↓	X	X	X	X	X	X	X	Follower in RC bus (default)	Follower in RC bus (default)
1XXXXXXX	↑	X	X	X	X	X	X	X	Header in RC bus	Header in RC bus
01XXXXXX	↓	↑	X	X	X	X	X	X	-	-
11XXXXXX	↑	↑	X	X	X	X	X	X	-	-
XXXX0XXX	X	X	X	X	↓	X	X	X	BACnet MS/TP in 485 port enabled (default)	Modbus RTU in 485 port disabled (default)
XXXX1XXX	X	X	X	X	↑	X	X	X	BACnet MS/TP in 485 port disabled	Modbus RTU in 485 port enabled
XXXXX000	X	X	X	X	X	↓	↓	↓	Autobaudrate (default)	2400 bps
XXXXX100	X	X	X	X	X	↑	↓	↓	9600 bps	4800 bps
XXXXX010	X	X	X	X	X	↓	↑	↓	19200 bps	9600 bps
XXXXX110	X	X	X	X	X	↑	↑	↓	38400 bps	19200 bps
XXXXX001	X	X	X	X	X	↓	↓	↑	57600 bps	38400 bps
XXXXX101	X	X	X	X	X	↑	↓	↑	76800 bps	57600 bps
XXXXX011	X	X	X	X	X	↓	↑	↑	115200 bps	76800 bps
XXXXX111	X	X	X	X	X	↑	↑	↑	Autobaudrate	115200 bps

Table 2. SW2 (BACnet MS/TP) (P1 to P7): BACnet MS/TP MAC address; (P8): Temperature unit (°C/°F)

Binary value b0 .. b7	Position								BACnet address	Description
	1	2	3	4	5	6	7	8		
0000000X	↓	↓	↓	↓	↓	↓	↓	X	0	-
1000000X	↑	↓	↓	↓	↓	↓	↓	X	1	-
0100000X	↓	↑	↓	↓	↓	↓	↓	X	2	-
1100000X	↑	↑	↓	↓	↓	↓	↓	X	3	-
...	...								...	-
1011111X	↑	↓	↑	↑	↑	↑	↑	X	125	-
0111111X	↓	↑	↑	↑	↑	↑	↑	X	126	-
1111111X	↑	↑	↑	↑	↑	↑	↑	X	127	-
XXXXXX0X	X	X	X	X	X	X	X	↓	-	Temperature in Celsius (default)
XXXXXX1X	X	X	X	X	X	X	X	↑	-	Temperature in Fahrenheit

Table 3. SW2 (Modbus RTU) (P1 to P6): Modbus server address; (P7): Degree decimals setting (P8): Temperature unit (°C/°F)

Binary value b0 .. b7	Position								Modbus address	Description
	1	2	3	4	5	6	7	8		
100000XX	↑	↓	↓	↓	↓	↓	X	X	1	-
010000XX	↓	↑	↓	↓	↓	↓	X	X	2	-
110000XX	↑	↑	↓	↓	↓	↓	X	X	3	-
...	...								...	-
101111XX	↑	↓	↑	↑	↑	↑	X	X	61	-
011111XX	↓	↑	↑	↑	↑	↑	X	X	62	-
111111XX	↑	↑	↑	↑	↑	↑	X	X	63	-
XXXXXX0X	X	X	X	X	X	X	↓	X	-	Temperature in degrees x1 (default)
XXXXXX1X	X	X	X	X	X	X	↑	X	-	Temperature in degrees x10. Example: 19.2°=192
XXXXXX00	X	X	X	X	X	X	X	↓	-	Temperature in Celsius (default)
XXXXXX11	X	X	X	X	X	X	X	↑	-	Temperature in Fahrenheit

Table 4. SW3 (P1 to P3): BACnet/Modbus polarization and termination resistor

Binary value b0 .. b2	Position			Description
	1	2	3	
0 X X	↓	X	X	EIA-485 bus without termination resistor. The gateway is not at one end of the EIA-485 bus (default value)
1 X X	↑	X	X	120 Ω termination resistor active. The gateway is at one end of the EIA-485 bus
X 0 0	X	↓	↓	No bus polarization (default value)
X 1 1	X	↑	↑	Bus polarization active



The DIP switches configuration will only take effect after rebooting the gateway.

### LEDs Information

Two LEDs are placed between SW1 and the Power connector at the gateway's bottom.

LED	Status	Description
<b>When the gateway is set for BACnet MS/TP</b>		
L1 Green	ON	EIA-485 bus link performed
	Flickering	Activity on the EIA/485 bus
	OFF	EIA-485 bus link not performed
L2 Red	ON	AC communication error
	Blinking	AC unit error
	Flashing	AC communication OK
<b>When the gateway is set for Modbus RTU</b>		
L1 Green	Blinking	Communication error
	Flashing	Any error in the AC unit
L1 Green + L2 Red	Flashing	Normal operation
L1 Green + L2 Red	Pulse	Gateway startup
<b>LED PATTERNS:</b>		
<b>Flickering:</b> 90 % on / 10 % off		
<b>Blinking:</b> 50 % on / 50 % off		
<b>Flashing:</b> 10 % on / 90 % off		
<b>Pulse:</b> 5 sec on / then off		

### Technical Specifications

<b>Housing</b>	Plastic, type PC (UL 94 V-0) Net dimensions (HxWxD): 93 x 53 x 58 mm / 3.7 x 2.1 x 2.3" Color: Light grey. RAL 7035
<b>Weight</b>	85 g (3 oz)
<b>Terminal wiring</b>	Wire cross-section/gauge per terminal: One core: 0.2 .. 2.5 mm <sup>2</sup> (24 .. 11 AWG) Two cores: 0.2 .. 1.5mm <sup>2</sup> (24 .. 15 AWG) Three cores: Not permitted  Use solid or stranded wires (twisted or with ferrule).
<b>External power supply (optional)</b>	SELV-rated NEC class 2 or limited power source (LPS) power supply. 12 VDC/AC; 0.1 A
<b>Mounting</b>	Wall, DIN rail, or inside the indoor unit
<b>EIA-485 port</b>	1 x pluggable terminal block (3 poles: B, A, and SG)
<b>BACnet MS/TP - Modbus RTU</b>	1 x RC bus pluggable terminal block (2 poles)
<b>AC unit port</b>	2 x Communication status
<b>LED indicators</b>	SW1: Gateway and baudrate configuration SW2: BACnet/Modbus address and temperature unit SW3: Bus polarization and termination:
<b>Operational and storage temperature</b>	Celsius: Op: 0 to +70°C; St: -20 to 85°C Fahrenheit: Op: 32 to 158°F; St: -4 to 185°F
<b>Operational and storage humidity</b>	5% to 95% RH non-condensing
<b>Isolation Voltage</b>	1500 VDC
<b>Isolation resistance</b>	1000 MΩ

### Disposal and Recycling



This product contains electronic components and must be properly disposed of according to local laws and regulations. For further information, refer to: <https://www.intesis.com/weee-regulation>

For further information on the installation, connection, and configuration of this gateway, refer to the [User manual](#).